



## Assembly Instructions

Description:	Windshield	Model:	BRUTE FORCE®
Part-Number:	ATV100-054	Approximate Assembly Time:	60 minutes

**Before you begin installation, read through the installation instructions and check to be sure all parts are present.**

**If you are in doubt as to any part of the installation, please ask your authorized Kawasaki dealer to complete the installation. Please note that Kawasaki cannot assume any responsibility for damage resulting from incorrect installation.**

### Parts List

<u>Part Number</u>	<u>Description</u>	<u>QTY</u>
20-250004-000	Dash Tray	1
20-202008-000	Windshield	1
50-530616-000	Nylon Screw	7
49-490519-000	Flat Washer	11
42-433027-000	Flange Nut	11
51-516324-000	M6 Metal Screw	4
80-845000-000	Cable	1
51-516216-000	M5 Metal Screw	2
49-490110-000	Flat Washer	4
42-423050-000	Nylok Nut	2

### Installation Instructions

\*Note: Installation of the windshield kit requires the use of Kawasaki Genuine Accessories part number ATV900-001A Cargo Box, mounted to the front rack of the ATV.

1. Place the Dash Tray on the raised portion of the cargo box, centered left to right. (fig. 1)
2. Using the Dash Tray as a drilling template, mark the four mounting points on the top of the Cargo Box with a suitable marker.
3. Remove the Dash Tray, drill the previously marked mounting locations with a 5/16" drill bit.

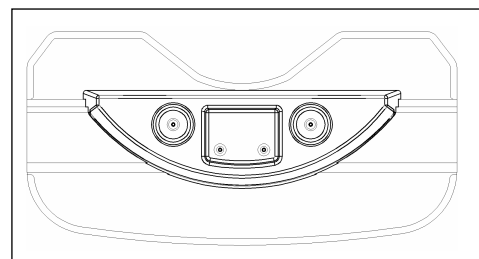


fig. 1

4. Assemble the Windshield to the Dash Tray using seven plastic screws, washers and flanged nuts.
5. Install the Windshield/Dash Tray assembly to the top of the Cargo Box using the four metal screws and flanged nuts. (fig. 2)
6. In order to limit the travel of the Cargo Top lid, drill  $\frac{1}{4}$ " holes in lid and base in the locations shown. (fig. 3)
7. Install the cable to the Cargo Box and lid using the 2 metal screws, washers and nuts. (fig 4)

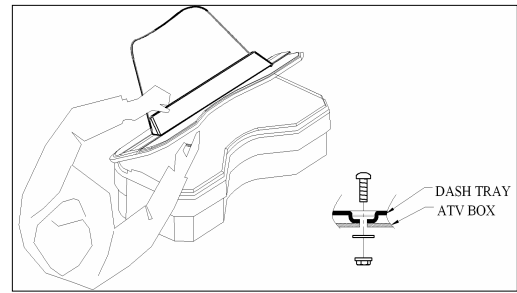


fig. 2

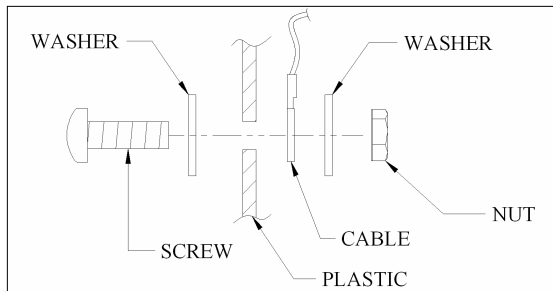


fig. 4

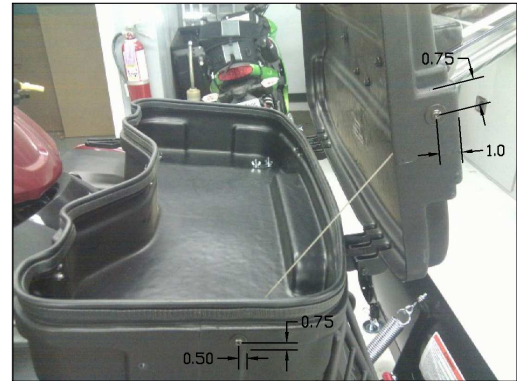


fig. 3

**Please check / adjust all screws in regular intervals.**

### **NOTICE**

**CAUTION:** DO NOT USE any other types of cleaners, chemicals, or solvents not designed especially for the plastic on this windshield. If there is a chemical incompatibility with the windshield material, permanent windshield cracking or surface damage may result. Do not clean in hot sun or high temperatures.

**CAUTION:** Plasticizers from new vehicle covers that are made from PVC may damage your windshield. Do not use a new cover for a few days. Remove it from its package and leave in the sun or other warm location.

**CAUTION:** Never ride your vehicle with loose windshield mounting hardware. Check the hardware for tightness regularly.

**CAUTION:** Always remove windshield before carrying on truck or trailer at speeds higher than ATV maximum speed. Always face ATV forward (in direction of travel).